

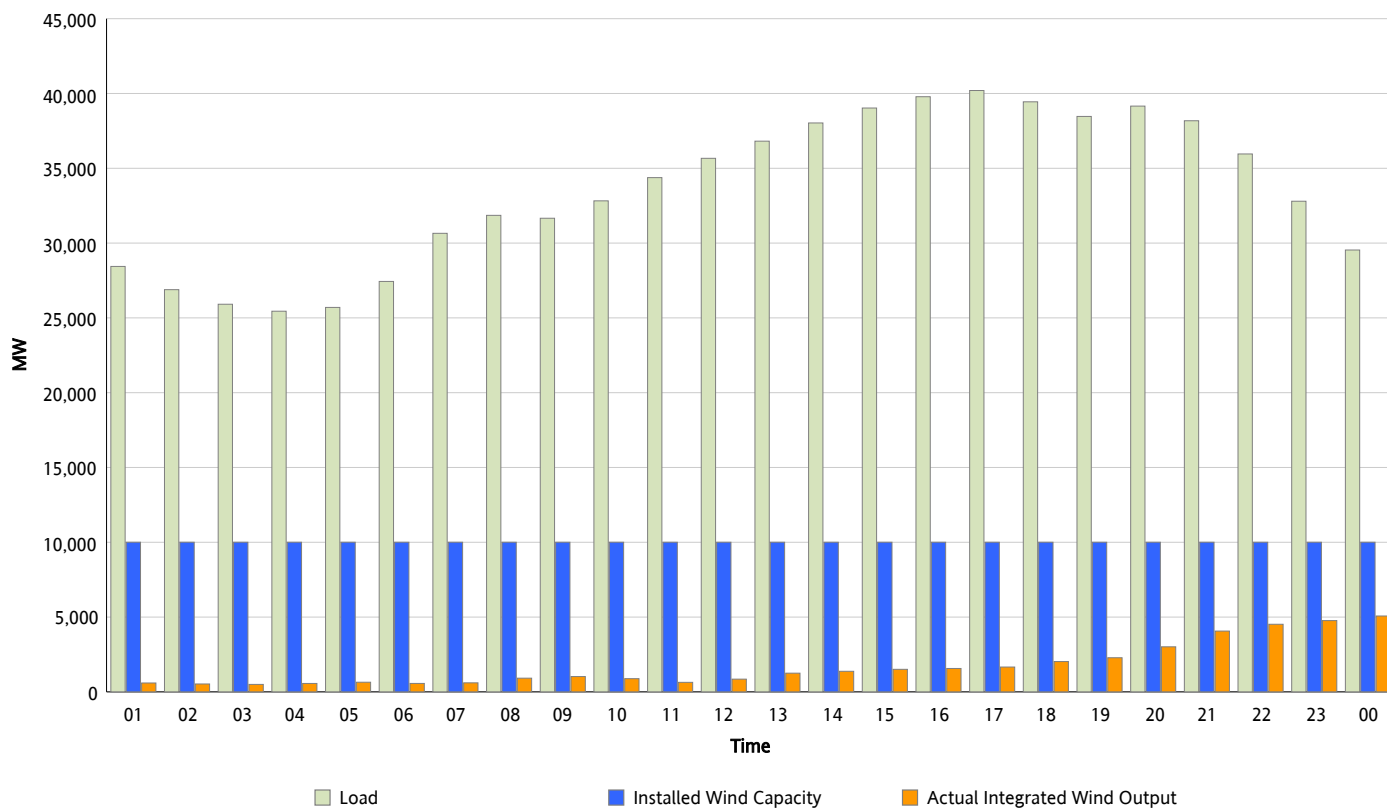


ERCOT Grid Operations

Wind Integration Report : 10/15/2012

Peak Load	40,200 MW
Load Peak Hour (HE)	17
Wind Over Peak	1,661 MW
Wind Record 06/19/12	8,368 MW
Max Wind Value*	5,192 MW
Wind Peak Time	23:45
Wind Integration %	18.02 %

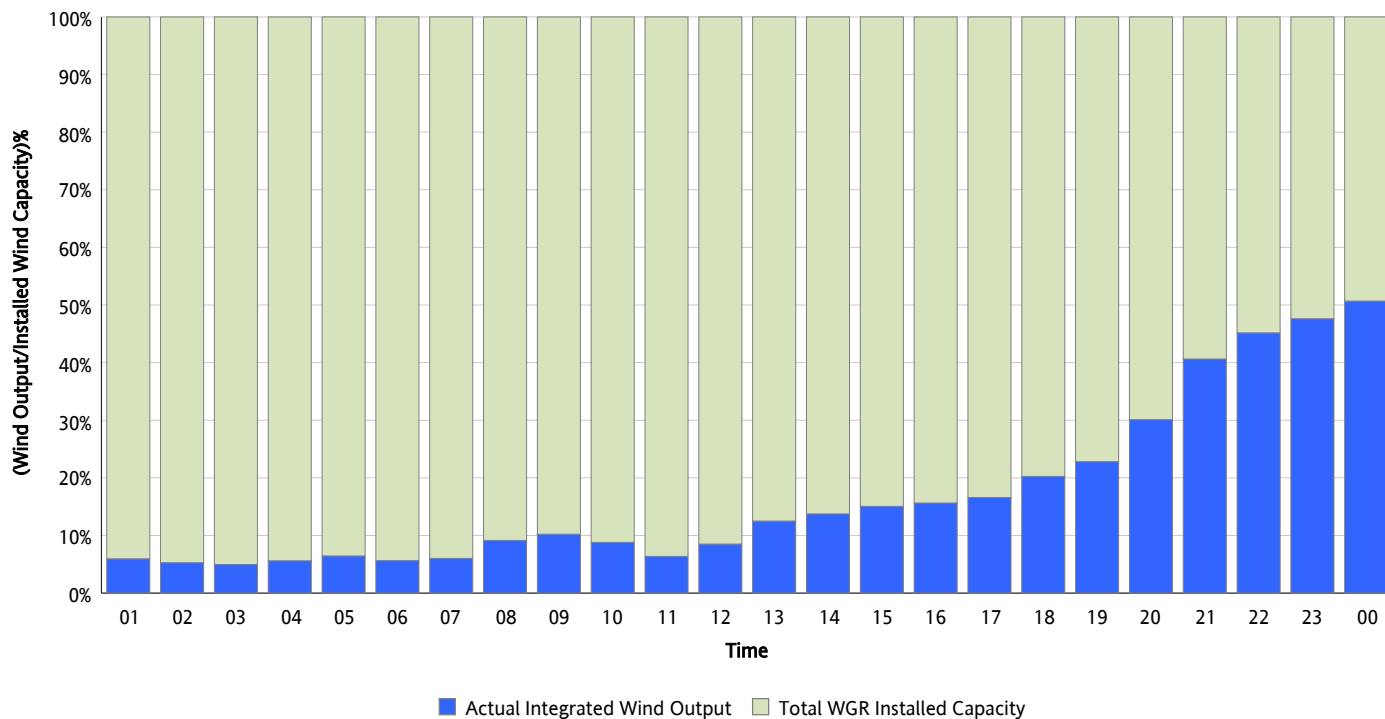
Hourly Average Actual Load vs. Actual Wind Output
10/15/2012



** Wind Record and Wind Max represent instantaneous values and the rest of the values are integrated over the hour*

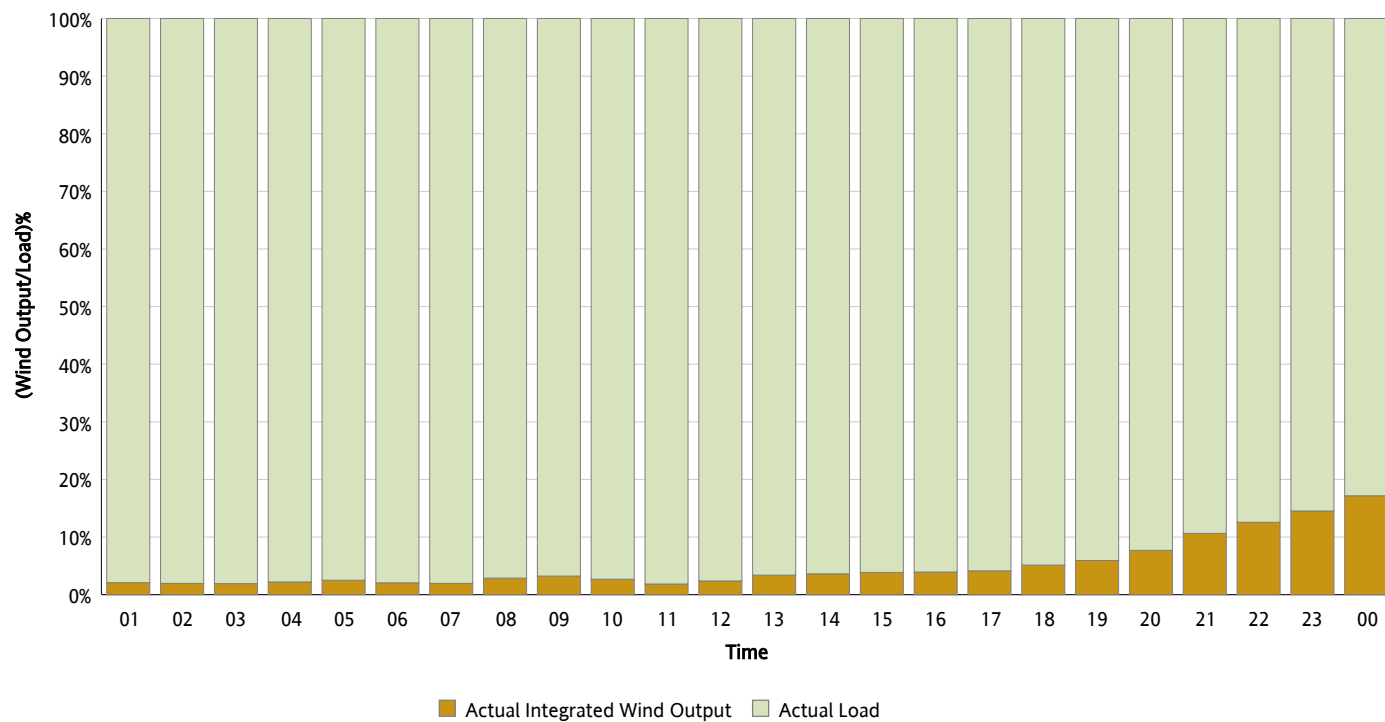
Actual Wind Output as a Percentage of the Total Installed Wind Capacity

10/15/2012



Actual Wind Output as a Percentage of the ERCOT Load

10/15/2012



ERCOT Load vs. Actual Wind Output

10/08/2012 - 10/15/2012

